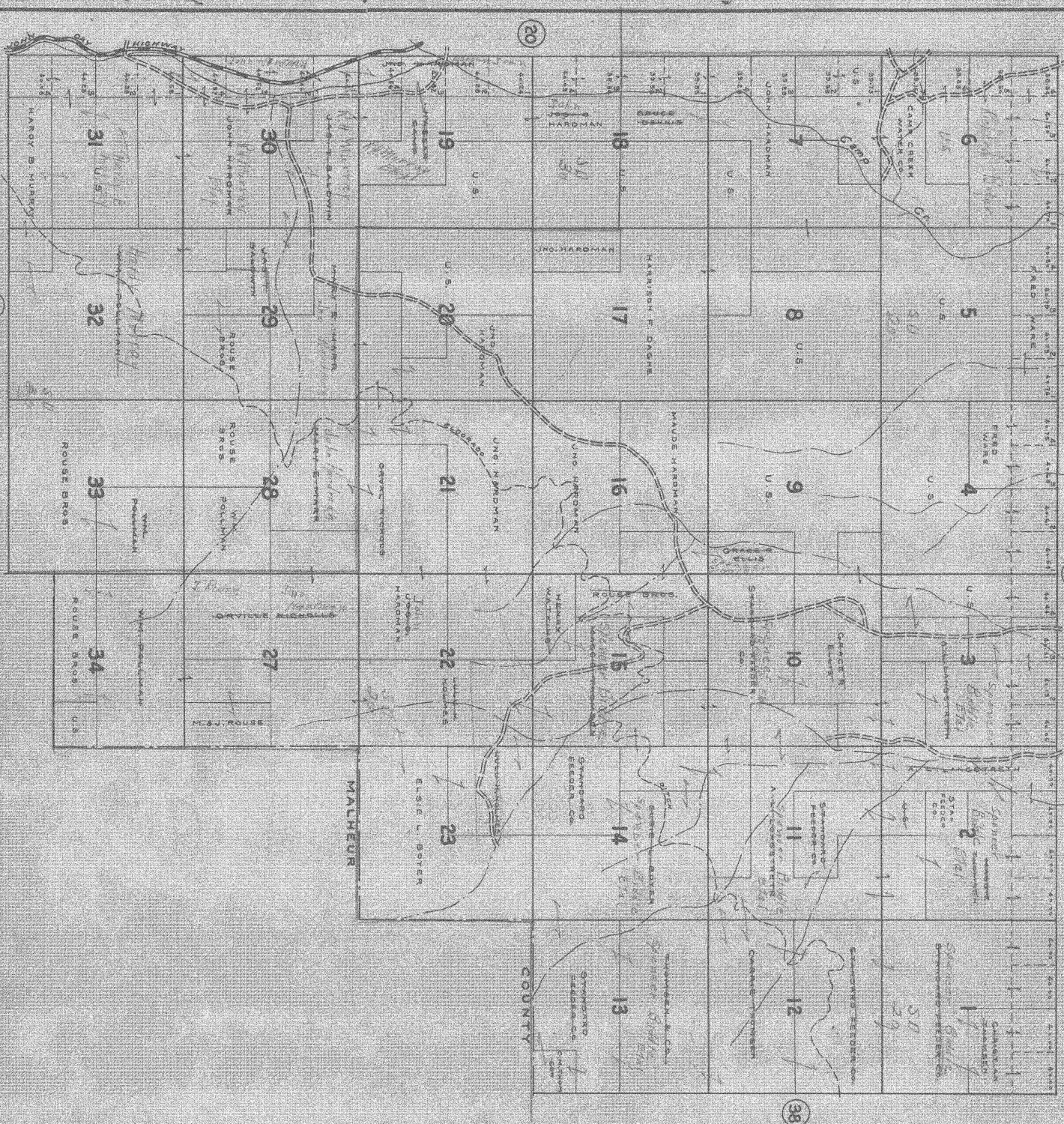


8

CHAS. F. METSKER CIVIL ENGINEER
2150 COMMERCE BLDG. PORTLAND OREGON
430 PACIFIC AVE. TACOMA WASHINGTON



—LEGEND—

- | | |
|---------------------|-------|
| PAYE ROADS | _____ |
| STATE HIGHWAYS | _____ |
| GRAVELED ROADS | _____ |
| DIRT ROADS | _____ |
| INTERIOR ROADS | _____ |
| RAILROADS | _____ |
| TRAILS | _____ |
| INTERMITTENT CREEKS | _____ |
| SCHOOLS | _____ |
- 5